



WESTEEL

GALVANIZED STORAGE



SCAN ME



It's not just a bin. Westeel storage systems are built to endure and provide you with only the best options, when it comes to your investment. Westeel has a diverse product offering to help you make a little extra time for yourself and the ones you share a table with.

Bin Pioneers

No company has more experience manufacturing grain storage systems for both commercial and on-farm application than Westeel. Westeel helped pioneer steel-sided grain storage back in the 1920s and today, as one of North America's largest producers of grain bins and tanks, Westeel continues to lead the industry in innovation, quality and product selection. All products are manufactured under the stringent requirements of ISO 9001, and employ the latest in computerized design and production technology throughout the manufacturing process. The result is products of superior quality and long-term value – products that represent the finest in commercial and on-farm grain storage available.

A Westeel solution for every storage need

Choosing the right grain storage system for your operation demands not only a careful analysis of both your short and long-term needs, but also an appreciation for the many factors that affect the overall product quality and functionality. Westeel offers a range of galvanized solutions to meet the diversity of needs and applications found in agriculture today. Moreover, each one incorporates the latest innovations and science in storage technology, providing you confidence that the material you are protecting is indeed protected. If you seek the best in galvanized storage for your operation, you've found it in Westeel.

Westeel Warranty

With a 5-year warranty of corrugated bins, 10-year structural (30-month paint) warranty on our Hopper Cones, there's reason to invest in our storage solutions.

Safety Assurance

Safety is always top-of-mind at Westeel. Whether it be inside or outside the bin, the Westeel engineering team is dedicated to your safety. Products are designed to applicable codes and jurisdictional requirements, and go above and beyond to ensure the safest product possible.

Flat Bottom Bins

Engineered for exceptional clean-out, superior strength & unbeatable versatility.

Westeel's premium quality storage solution, flat bottom bins are built with today's growers in mind. Engineered for superior strength and utilizing heavy gauge, ultra-flat corrugated steel, Westeel flat bottom bins are tested for all weather conditions around the world.

Bin Sheets 4" Wide Corrugation with G115 Galvanized Steel

25% heavier than the industry standard, the result is a longer bin life. Most sheets are rolled from high strength, 65,000 PSI tensile strength and are 44" tall, allowing for stronger, yet lighter sheets; therefore, fewer seams for improved weather protection. Lighter sheets combined with the fewer bolts overall provide our bins with the added advantage of being easier and faster to erect as well as improved weather protection.

Extra strong construction throughout

Westeel's engineers have designed the maximum strength out of every pound of steel to give you superior structural strength over the entire bin. That means a bin better equipped to handle the added weight of heavy snow loads, or the structural stress of extreme temperature conditions and high winds.

Exceptional bin clean-out

Westeel's ultra-flat 4" wide corrugation pattern and lack of internal stiffeners delivers far superior bin clean-out, virtually eliminating the possibility of grain hang-up. If contamination of grain varieties is a concern to you, Westeel is the answer.

Designed for easy assembly

Flat bottom bins benefit from a computer assisted manufacturing process that produces precision cut sheets every time. The result is tighter seals at the connection points and an easier to assemble bin overall. Installation of a Westeel full floor aeration system is also easy, thanks to the pre-punching of holes in the bottom sheet, which makes connection to drying floor flashing a snap.

Unstiffened

Unstiffened brings high capacity storage to today's growers with on-farm sizes ranging from 2,400 - 72,720 BPH. Westeel bins are engineered to eliminate the need for internal or external stiffeners. The result is an extremely strong, expandable bin that provides the ultimate in bin clean-out.

Stiffened

Westeel's Grain Bins are specially designed for the needs of your operation. Specifically engineered for exceptional sidewall strength, stiffened sidewalls are over 2½ times more efficient at achieving the maximum load possible out of each pound of steel as compared to competitive unstiffened bins. That means you can attain the additional strength you want without the extra expense of having to use a heavier gauge. Its heavy-duty super-robust walk-in design gives you the flexibility to add tiers to your bin when required without having to upgrade your door. It also features a more precise, cleaner assembly without unsightly welds for a super-tight fit. An improved latch design makes the door easier to open and operate, and the redesigned doorframe eliminates all gaps for the best seal possible.

Westeel Bins are SureTrack Ready

SureTrack Ready means equipment is compatible with the AGI SureTrack online software platform, available on any internet connected device. Equipment integration can be as simple as reporting for fuel efficiency, as complex as automating fans on a grain storage system or as protective as sensor reporting for hazard monitoring. Regardless of the level of integration, all the data captured drives optimal production, builds traceability and enhances safety.





Quality Top to Bottom

OPTIONAL ACCESSORIES

- Customizable platforms and catwalks
- Additional roof vents
- Roof inspection hatch reinforcing kit
- Circular stairs
- Interior ladders
- Exterior ladders
- Safety cages
- Ladder Pass-Through Rails
- Auger shoot
- Sealform foundation system
- Lock-n-Load floor system
- AGI EasyFlow2 U-Trough or tube bin unload system
- Aeration fans and transitions
- Hopper cones

Advanced Continuous Roof Angle

Advanced roof design
up to 63% stronger

Westeel's roof has been designed for faster assembly and improved overall strength. The design also provides up to 124% greater bend resistance resulting in greater snow load capacity over conventional roof designs. Manufactured using the latest in computerized automated production equipment, the roof has fewer parts than the competition. The production process also allows for pre-stamped vent openings, eliminating the need to cut openings on site.

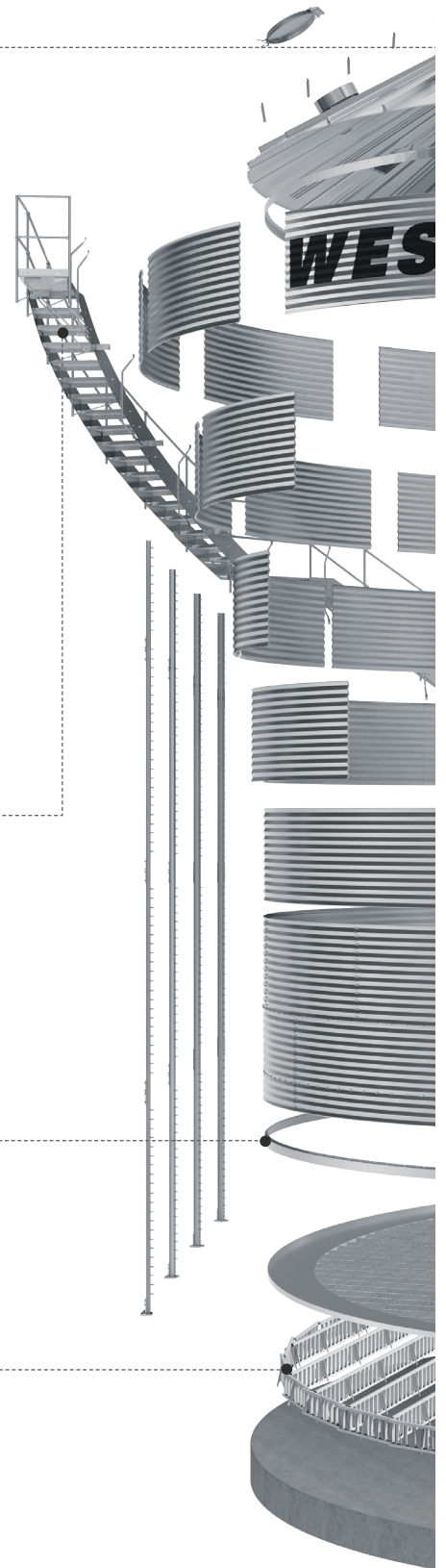
Circular Stairs

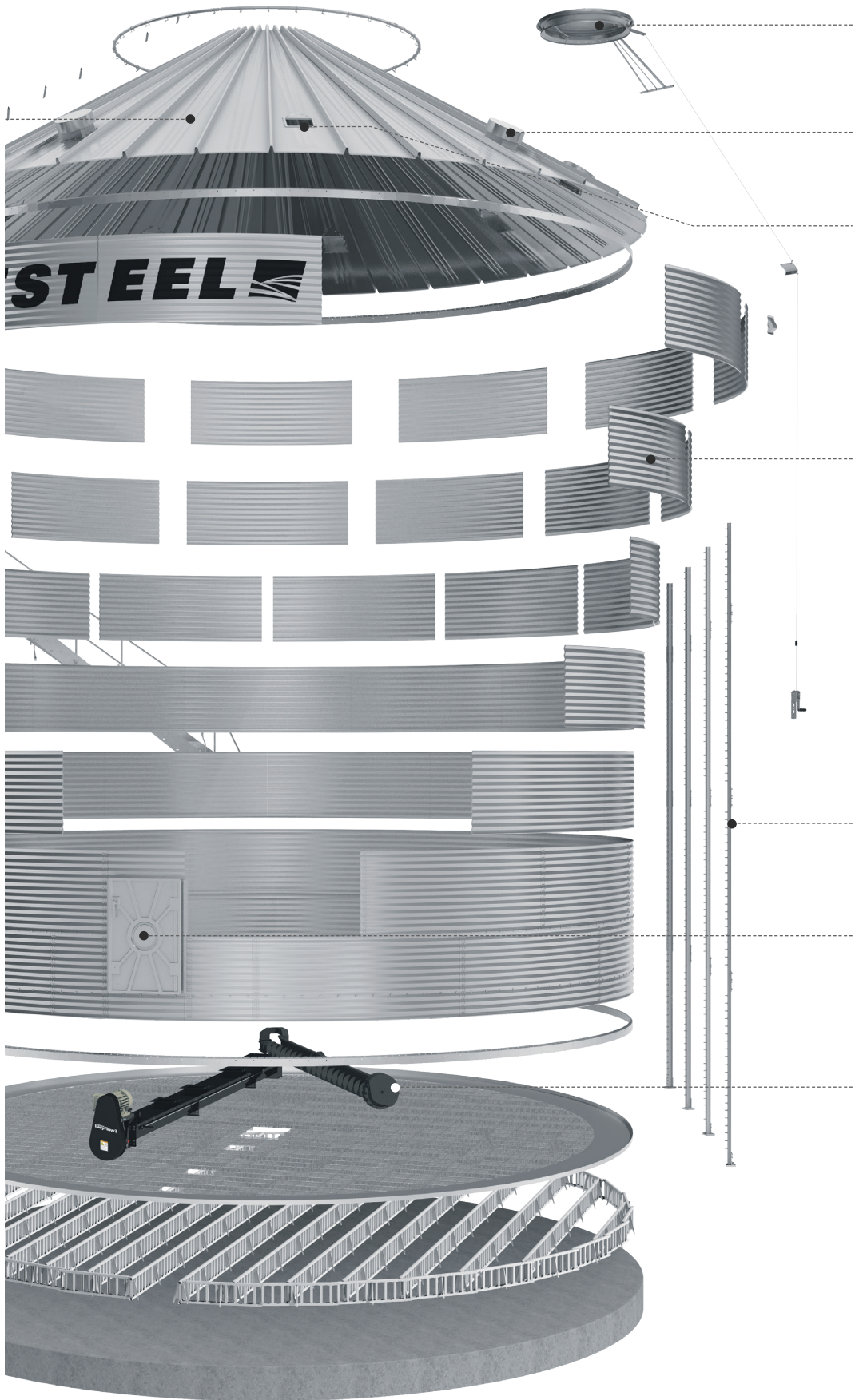
Meeting national building code

Continuous Bottom Ring Angle

Lock-n-Load Floor System

Westeel's premium Lock-n-Load Floor System delivers maximum performance when full volume conditioning or natural air-drying is required.





33" - 52" Wide Fill Cap with Remote Opener

15" Round or Gooseneck Galvanized Roof Vents

Pre punched raised edging holes
To help prevent water from entering the bin.

4" Wide Corrugation with G115 Galvanized Steel

Variable Section Stiffeners (VSS)
Available on stiffend models. This innovative upright technology works on the principle that the greater the vertical load required, the larger the stiffener section should be, therefore it matches stiffener thickness and size to the vertical load. Westeel's Variable Section Stiffener also makes use of a laminating system, which maximizes strength while minimizing the use of splice plates in most connections making for an easier installation.

Walk-In-Door
Constructed with a heavy duty sturdy welded frame making them reliable and cost effective.

EasyFlow2 U-Trough Unload System
AGI's EasyFlow, Standard output and high output Unload Systems are designed for the rigors of on-farm use feature superior durability, strength and performance.

Hopper Cones

With tens of thousands in use, Westeel's welded hopper cone is the most trusted choice for Western Canadian farmers seeking dependable protection and long term value. Each cone is manufactured by craftsmen using advanced fabrication methods and heavy gauge steel components throughout. Most important, this cone has been specifically engineered to provide optimum support for your Westeel Wide-Corr or Standard-Corr bin, thus protecting your investment and ensuring decades of worry free operation.

Available for 14', 15', 16', 18', 19', 21', 24' and 27' diameter bins.

Guaranteed to Last

Mounting a bin on an unmatched cone can cause failure of the ring beam, thereby causing structural failure of the bin wall. With Westeel hopper cones, you have peace of mind knowing both the bin and cone are manufactured and warranted by Westeel

Optional Foundations

Protect your Westeel cone and bin (and the commodities it stores) with an engineered Westeel foundation. This heavy-duty foundation requires no concrete and is manufactured from HSS tubing, so it will be easy to move should your storage needs change down the road. Professionally engineered, it is more robust than competitive designs, and features two, three or four rings (depending on your bin's size) to provide as large a footprint as possible for your bin. The larger the footprint, the more your hopper bin's load is dispersed – the greater its stability. Don't take chances with your bin and cone investment. Insist on a Westeel foundation.

STANDARD FEATURES

- Upright support brackets (14' and 19' sizes)
- 24" discharge clearance (26" on 16" model)
- 35° cone slope
- Heavy-duty steel construction
- Engineered for long life
- Inspection hatch on bottom of cone
- One piece vented legs
- Pressed cone sheets
- Standard rack and pinion slide gate (with long handle)
- 5-step superior metal preparation prior to paint application
- Primer on interior and exterior surfaces plus enamel on exterior surfaces
- Structural welds are Canadian Welding Bureau Certified
- 10-year structural warranty
- 30-month paint warranty



SCAN ME

OPTIONAL ACCESSORIES

- Hopper aeration system
- Engineered steel foundations



Floor & Unloading Systems

Lock-n-Load Floor System

Westeel's premium Lock-n-Load Floor System delivers maximum performance when full volume conditioning or natural air-drying is required.

With unbeatable strength and ease of installation, Westeel's aeration floors are the best way to protect your grain.

The A-frame floor support system, designed specifically to fit with Westeel's Lock-n-Load Floor System package, with its reinforced columns, provide less resistance to airflow without sacrificing strength. The galvanized supports and planks are lightweight, making it easier to install and manipulate without sacrificing strength or integrity.



AGI EasyFlow2 U-Trough Unload System

AGI EasyFlow2 Unload Systems are designed for the rigors of on-farm use and feature superior durability, strength and performance. Make grain clean-out easy and efficient with the AGI U-Trough or Tube unload systems.



SCAN ME

IMPORTANT FEATURES

- Large double center gearbox with solid, common shaft for increased longevity
- Easy maintenance provided by removing the unload flight without removing the motor or rest of the powerhead
- Aggressive wheel tread pattern, unique fender on the end wheel, and adjustable backboard allows for improved clean-out
- Extra wide sump opening allows for higher capacity grain flow into unload system
- Optional E-sump with independent controls positioned near the center sump allows for use in emergency situations enabling the bin to be emptied if the center sump is blocked

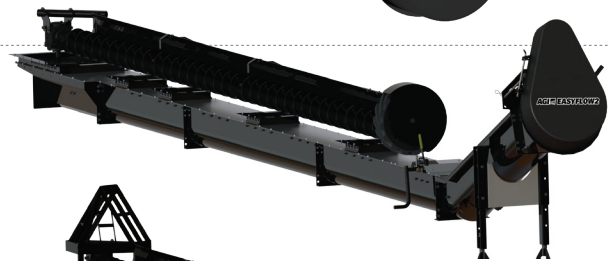
Tube Unload

Available for bin sizes
24' to 48' in diameter
8" | 3,000 BPH



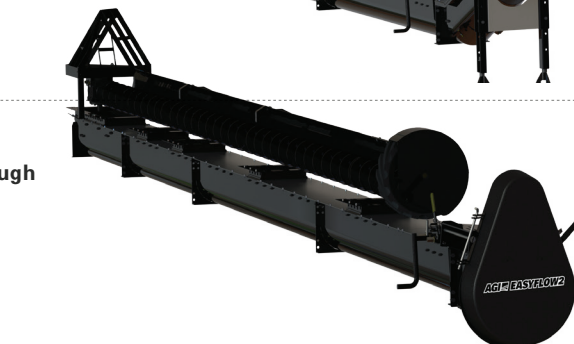
HO U-Trough Unload

Available for bin sizes
24' to 60' in diameter
11" | 6,000 - 9,000 BPH

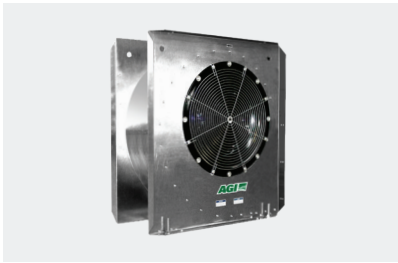


Standard Output U-Trough Unload

Available for bin sizes
21' to 60' in diameter
7,500 BPH | 5,000 BPH



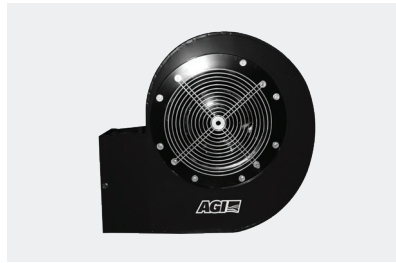
Centrifugal Fans



Low Speed Centrifugal Fans

AGI low speed centrifugal fans are designed to maximize airflow at lower to medium static pressure.

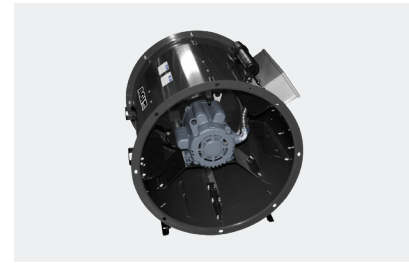
- Available in 5-50hp models



High Speed Centrifugal Fans

AGI high speed centrifugal fans are designed to maximize airflow at medium to high static pressure.

- Available in 3-40hp models

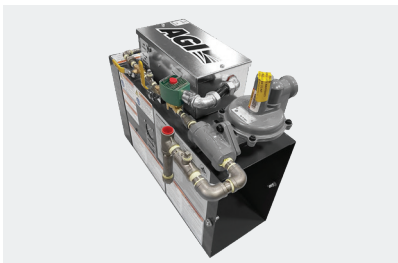


In-Line Centrifugal Fans

AGI in-line centrifugal fans are designed to maximize airflow at low to medium static pressures in cereal grains.

- Available in 3-15hp models

Supplemental Heaters



Low Temperature Downstream Heaters

AGI low temperature downstream heaters allow for 24 hour grain drying when high humidity conditions prevail. The heater is easily installed between the fan and bin.

- Pairs with 3-15hp high speed and inline fans
- Available in 60K-200K BTU models



High Temperature Downstream Heaters

AGI high temperature downstream heaters are designed to increase temperature while decreasing humidity. Recommended to be used with a stirrator system. Allows for crops to be efficiently and effectively dried inside of your grain bin.

- Pairs with 5-50hp low speed fans
- 200K-2,350K BTU with 5-15hp fans
- 603K-4,230K BTU with 20-50hp fans



Low Temperature Upstream Heaters

AGI low temperature upstream heaters are your solution when a slight rise in temperature is required to help reduce humidity in your bin. Low temp heaters are designed to provide a consistent amount of heat which results in less cycling and increases the life of components.

- Pairs with 10-50hp low speed fans
- 37K-346K BTU range

Accessories

AGI offers a wide range of accessories to adapt aeration fans and heaters to various types of aeration systems.

- Transitions
- Adapters
- Fan Supports
- Static Pressure Gauges
- Plenum Thermometers



SCAN ME

AGI Bulk Feed Tanks

One of the most reliable Bulk Feed Tanks on the market

AGI Bulk Feed Tanks are designed for maximum protection, ease-of-use and durability. Our tanks are engineered to withstand the pressures of day-to-day use and with options and features to suit your needs. When it comes to reliable feed tanks, you can trust AGI.

KEY FEATURES

- Bins include remote cap opener, 16" outlet collar, side wall ladder package, wide 22" fill cap, 32" inch clearance and 40° roof
- 40° roof pitch for better feed fill and greater capacity
- Rolled and crimped connections and extended sidewall drip edge for outstanding drip edge
- G-115 galvanized steel wall sheets for extended life of galvanized coating
- Engineered for optimal structural strength
- Precisely manufactured to AGI quality standards



SCAN ME



PERFORMANCE ENHANCING FEATURES



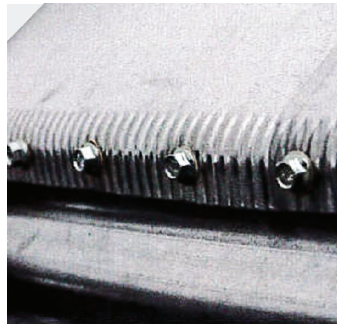
Access lid with 200° opening range lays flat to reduce potential damage during fill and provide greater access.



Remote open lid can be opened and closed from the bin's base for extra convenience and safety.



Heavy-duty ladder with top handrail provides extra safety and easy access.



Rolled and crimped connections on the eaves and the hopper-to-sidewall matches corrugation of sidewall for extra strength and protection of contents.



Extended sidewall drip edge directs moisture away from the discharge end of the hopper.

AGI BULK FEED TANKS

TANK DIAMETER (ML)	HOPPER ANGLE	NUMBER OF SIDEWALL RINGS	APPROPRIATE MAXIMUM CAPACITY						
			CUBIC FEET (FT ³)	BUSHELS *	U.S TONS		CUBIC METERS (M ³) **	METRIC TONS	
					40 PCF	45 PCF		640 KG/M ³	721 KG/M ³
6' (1.83)	60°	1	142	114	2.8	3.2	4.0	2.6	2.9
6' (1.83)	60°	2	216	174	4.3	4.9	6.1	3.9	4.4
6' (1.83)	60°	3	291	234	5.8	6.5	8.2	5.3	5.9
6' (1.83)	60°	4	365	294	7.3	8.2	10.3	6.6	7.5
7' (2.13)	67°	1	237	190	4.7	5.3	6.7	4.3	4.8
7' (2.13)	67°	2	338	272	6.8	7.6	9.6	6.1	6.9
7' (2.13)	67°	3	440	353	8.8	9.9	12.5	8.0	9.0
7' (2.13)	67°	4	541	435	10.8	12.2	15.3	9.8	11.1
7' (2.13)	67°	5	643	517	12.9	14.5	18.2	11.6	13.1
7' (2.13)	67°	6	744	598	14.9	16.7	21.1	13.5	15.2
9' (2.74)	60°	2	568	456	11.4	12.8	16.1	10.3	11.6
9' (2.74)	60°	3	736	591	14.7	16.6	20.8	13.3	15
9' (2.74)	60°	4	904	726	18.1	20.3	25.6	16.4	18.4
9' (2.74)	60°	5	1071	861	21.4	24.1	30.3	19.4	21.9
9' (2.74)	60°	6	1239	996	24.8	27.9	35.1	22.5	25.3
12' (3.66)	60°	2	1153	927	23.1	25.9	32.7	20.9	23.5
12' (3.66)	60°	3	1451	1167	29.0	32.7	41.1	26.3	29.6
12' (3.66)	60°	4	1750	1407	35.0	39.4	49.6	31.7	35.7
12' (3.66)	60°	5	2048	1647	41.0	46.1	58.0	37.1	41.8
12' (3.66)	60°	6	2347	1886	46.9	46.9	66.5	42.5	47.9

* 1.244 FT³/BU
 ** 35.31 FT³/M³



WIDE-CORR® GRAIN BIN | FARM SERIES

MODEL NUMBER	TIERS #	DIAMETER		CAPACITY ⁽¹⁾			EAVES HEIGHT		OVERALL HEIGHT ⁽⁴⁾		WEIGHT	
		FT	M	BU ⁽²⁾	M ³	TONNES ⁽³⁾	FT	M	FT	M	LB	KG
1504	4	14' 11"	4.55	2400	80	65	14' 10"	4.52	18' 11"	5.78	2,500	1,150
1505	5	14' 11"	4.55	2940	98	80	18' 6"	5.64	22' 7"	6.89	3,100	1,400
1506	6	14' 11"	4.55	3490	116	95	22' 2"	6.76	26' 3"	8.01	3,600	1,650
1507	7	14' 11"	4.55	4030	134	109	25' 10"	7.87	29' 11"	9.13	4,300	1,950
1804	4	17' 11"	5.46	3500	117	95	14' 10"	4.52	19' 10"	6.04	3,000	1,350
1805	5	17' 11"	5.46	4290	143	116	18' 6"	5.64	23' 6"	7.16	3,700	1,650
1806	6	17' 11"	5.46	5080	169	138	22' 2"	6.76	27' 2"	8.27	4,500	2,050
1807	7	17' 11"	5.46	5860	195	159	25' 10"	7.87	30' 10"	9.39	5,400	2,450
2104	4	20' 11"	6.37	4840	162	131	14' 10"	4.52	20' 8"	6.30	3,700	1,650
2105	5	20' 11"	6.37	5910	197	160	18' 6"	5.64	24' 4"	7.42	4,400	2,000
2106	6	20' 11"	6.37	6980	233	189	22' 2"	6.76	28' 0"	8.54	5,400	2,450
2107	7	20' 11"	6.37	8050	269	218	25' 10"	7.87	31' 8"	9.65	6,400	2,900
2108	8	20' 11"	6.37	9120	304	247	29' 6"	8.99	35' 4"	10.77	7,600	3,450
2404	4	23' 10"	7.28	6420	215	174	14' 10"	4.52	21' 6"	6.56	4,200	1,900
2405	5	23' 10"	7.28	7820	261	212	18' 6"	5.64	25' 2"	7.68	5,100	2,300
2406	6	23' 10"	7.28	9220	308	250	22' 2"	6.76	28' 10"	8.80	6,300	2,850
2407	7	23' 10"	7.28	10610	354	288	25' 10"	7.87	32' 6"	9.92	7,600	3,450
2408	8	23' 10"	7.28	12010	401	326	29' 6"	8.99	36' 2"	11.03	9,000	4,100
2704	4	26' 10"	8.19	8240	276	224	14' 10"	4.52	22' 5"	6.83	5,100	2,300
2705	5	26' 10"	8.19	10010	335	272	18' 6"	5.64	26' 1"	7.94	6,100	2,750
2706	6	26' 10"	8.19	11780	394	320	22' 2"	6.76	29' 9"	9.06	7,400	3,350
2707	7	26' 10"	8.19	13550	453	368	25' 10"	7.87	33' 5"	10.18	9,000	4,050
2708	8	26' 10"	8.19	15320	511	416	29' 6"	8.99	37' 1"	11.30	10,500	4,750
2709	9	26' 10"	8.19	17090	570	464	33' 2"	10.11	40' 9"	12.41	12,300	5,600
3004	4	29' 10"	9.10	10330	346	280	14' 10"	4.52	22' 10"	6.97	6,100	2,750
3005	5	29' 10"	9.10	12510	419	339	18' 6"	5.64	26' 6"	8.09	7,500	3,400
3006	6	29' 10"	9.10	14700	491	399	22' 2"	6.76	30' 2"	9.20	8,900	4,050
3007	7	29' 10"	9.10	16880	564	458	25' 10"	7.87	33' 10"	10.32	10,700	4,850
3008	8	29' 10"	9.10	19070	637	517	29' 6"	8.99	37' 6"	11.44	12,600	5,700
3009	9	29' 10"	9.10	21250	709	576	33' 2"	10.11	41' 2"	12.56	14,800	6,700
3304	4	32' 10"	10.01	12680	425	344	14' 10"	4.52	23' 9"	7.23	7,000	3,150
3305	5	32' 10"	10.01	15320	513	416	18' 6"	5.64	27' 5"	8.35	8,500	3,850
3306	6	32' 10"	10.01	17960	601	487	22' 2"	6.76	31' 1"	9.47	10,100	4,600
3307	7	32' 10"	10.01	20610	689	559	25' 10"	7.87	34' 9"	10.58	12,000	5,450
3308	8	32' 10"	10.01	23250	777	631	29' 6"	8.99	38' 5"	11.70	14,200	6,450
3309	9	32' 10"	10.01	25900	865	702	33' 2"	10.11	42' 1"	12.82	16,500	7,500
3604	4	35' 10"	10.91	15300	514	415	14' 10"	4.52	24' 7"	7.49	8,100	3,650
3605	5	35' 10"	10.91	18450	618	500	18' 6"	5.64	28' 3"	8.61	9,800	4,450
3606	6	35' 10"	10.91	21590	723	586	22' 2"	6.76	31' 11"	9.73	11,500	5,250
3607	7	35' 10"	10.91	24740	827	671	25' 10"	7.87	35' 7"	10.85	13,600	6,200
3608	8	35' 10"	10.91	27890	932	756	29' 6"	8.99	39' 3"	11.96	16,000	7,250
3609	9	35' 10"	10.91	31030	1036	842	33' 2"	10.11	42' 11"	13.08	18,500	8,400
3905	5	38' 10"	11.82	21900	734	594	18' 6"	5.64	29' 1"	8.87	10,800	4,900
3906	6	38' 10"	11.82	25590	857	694	22' 2"	6.76	32' 9"	9.99	13,100	5,950
3907	7	38' 10"	11.82	29290	980	794	25' 10"	7.87	36' 5"	11.11	15,300	6,950
3908	8	38' 10"	11.82	32980	1103	895	29' 6"	8.99	40' 1"	12.23	17,900	8,100
3909	9	38' 10"	11.82	36670	1225	995	33' 2"	10.11	43' 9"	13.35	20,700	9,400
4204	4	41' 9"	12.73	21410	720	581	14' 10"	4.52	26' 4"	8.02	9,800	4,450
4205	5	41' 9"	12.73	25690	862	697	18' 6"	5.64	30' 0"	9.14	11,800	5,400
4206	6	41' 9"	12.73	29970	1004	813	22' 2"	6.76	33' 8"	10.25	14,300	6,500
4207	7	41' 9"	12.73	34260	1147	929	25' 10"	7.87	37' 4"	11.37	16,700	7,600
4208	8	41' 9"	12.73	38540	1289	1045	29' 6"	8.99	41' 0"	12.49	19,500	8,850
4209	9	41' 9"	12.73	42820	1431	1162	33' 2"	10.11	44' 8"	13.61	23,000	10,450
4504	4	44' 9"	13.64	24910	838	676	14' 10"	4.52	27' 2"	8.28	10,800	4,900
4505	5	44' 9"	13.64	29830	1001	809	18' 6"	5.64	30' 10"	9.40	12,900	5,850
4506	6	44' 9"	13.64	34740	1165	942	22' 2"	6.76	34' 6"	10.52	15,500	7,050
4507	7	44' 9"	13.64	39660	1328	1076	25' 10"	7.87	38' 2"	11.64	18,200	8,250
4508	8	44' 9"	13.64	44580	1491	1209	29' 6"	8.99	41' 10"	12.75	21,100	9,600
4509	9	44' 9"	13.64	49490	1655	1342	33' 2"	10.11	45' 6"	13.87	24,300	11,050
4804	4	47' 9"	14.55	28720	967	779	14' 10"	4.52	28' 0"	8.54	11,900	5,400
4805	5	47' 9"	14.55	34320	1153	931	18' 6"	5.64	31' 8"	9.66	14,200	6,450
4806	6	47' 9"	14.55	39910	1338	1083	22' 2"	6.76	35' 4"	10.78	17,000	7,750
4807	7	47' 9"	14.55	45510	1524	1234	25' 10"	7.87	39' 0"	11.90	20,100	9,150
4808	8	47' 9"	14.55	51100	1710	1386	29' 6"	8.99	42' 8"	13.02	23,600	10,700
4809	9	47' 9"	14.55	56690	1896	1538	33' 2"	10.11	46' 4"	14.13	27,600	12,550

1. Capacities shown include 30° roof cone.

2. Based on 1,244 cu. ft. per bu. and 5% compaction in cylinder (U.S. BPH).

3. Based on 770 kg/m³ and 5% compaction in cylinder.

4. To arrive at height of rope bracket in closed position: add 9" (0.23 m) to 15'-30' bins and 15" (9.38 m) to 33'-48' bins.

Note: Most farm series bins, up to and including 10,000 BPH, can use the auger chute. All other farm series bins require center unloading equipment. Upgraded Stir or Cir bins should be used with stirring or recirculating devices.

WIDE-CORR® GRAIN BIN | FARM SERIES

MODEL NUMBER	TIERS #	DIAMETER		CAPACITY ⁽¹⁾			EAVES HEIGHT		OVERALL HEIGHT ⁽⁴⁾		WEIGHT	
		FT	M	BU ⁽²⁾	M ³	TONNES ⁽³⁾	FT	M	FT	M	LB	KG
5104	4	50' 9"	15.46	32,860	1,106	891	14' 10"	4.52	28' 6"	8.70	14,000	6,350
5105	5	50' 9"	15.46	39,170	1,316	1,062	18' 6"	5.64	32' 2"	9.81	16,500	7,450
5106	6	50' 9"	15.46	45,490	1,526	1,234	22' 2"	6.76	35' 10"	10.93	19,400	8,800
5107	7	50' 9"	15.46	51,800	1,736	1,405	25' 10"	7.87	39' 6"	12.05	22,700	10,300
5108	8	50' 9"	15.46	58,120	1,946	1,576	29' 6"	8.99	43' 2"	13.17	26,400	11,950
5109	9	50' 9"	15.46	64,430	2,156	1,748	33' 2"	10.11	46' 10"	14.28	30,600	13,900
5405	5	53' 9"	16.37	44,400	1,493	1,204	18' 6"	5.64	33' 1"	10.08	17,900	8,150
5406	6	53' 9"	16.37	51,480	1,728	1,396	22' 2"	6.76	36' 9"	11.19	21,100	9,550
5407	7	53' 9"	16.37	58,560	1,963	1,588	25' 10"	7.87	40' 5"	12.31	24,600	11,150
5408	8	53' 9"	16.37	65,640	2,199	1,780	29' 6"	8.99	44' 1"	13.43	28,400	12,900
5409	9	53' 9"	16.37	72,720	2,434	1,972	33' 2"	10.11	47' 9"	14.55	33,000	14,950

STIFFENED GRAIN BIN SPECIFICATIONS

MODEL NUMBER	TIERS #	DIAMETER		CAPACITY ⁽¹⁾			EAVES HEIGHT		OVERALL HEIGHT ⁽⁴⁾		WEIGHT	
		FT	M	BU ⁽²⁾	M ³	TONNES ⁽³⁾	FT	M	FT	M	LB	KG
1505	5	14' 11"	4.55	2,940	98	80	18' 6"	5.64	22' 7"	6.89	3,200	1,450
1506	6	14' 11"	4.55	3,490	116	95	22' 2"	6.76	26' 3"	8.01	3,600	1,600
1507	7	14' 11"	4.55	4,030	134	109	25' 10"	7.87	29' 11"	9.13	4,100	1,850
1508	8	14' 11"	4.55	4,580	153	124	29' 6"	8.99	33' 7"	10.25	4,400	2,000
1509	9	14' 11"	4.55	5,130	171	139	33' 2"	10.11	37' 3"	11.36	5,000	2,300
1510 ⁽⁴⁾	10	14' 11"	4.55	5,670	189	154	36' 10"	11.23	40' 10"	12.45	5,400	2,450
1511 ⁽⁴⁾	11	14' 11"	4.55	6,220	207	169	40' 6"	12.35	44' 6"	13.57	6,000	2,750
1512 ⁽⁴⁾	12	14' 11"	4.55	6,770	225	184	44' 2"	13.46	48' 2"	14.68	6,800	3,100
1805	5	17' 11"	5.46	4,290	143	116	18' 6"	5.64	23' 6"	7.16	3,800	1,750
1806	6	17' 11"	5.46	5,080	169	138	22' 2"	6.76	27' 2"	8.27	4,300	1,950
1807	7	17' 11"	5.46	5,860	195	159	25' 10"	7.87	30' 10"	9.39	4,800	2,150
1808	8	17' 11"	5.46	6,650	222	180	29' 6"	8.99	34' 6"	10.51	5,300	2,400
1809	9	17' 11"	5.46	7,440	248	202	33' 2"	10.11	38' 2"	11.63	6,000	2,750
1810 ⁽⁴⁾	10	17' 11"	5.46	8,220	274	223	36' 10"	11.23	41' 8"	12.71	6,700	3,050
1811 ⁽⁴⁾	11	17' 11"	5.46	9,010	300	244	40' 6"	12.35	45' 4"	13.83	7,500	3,400
1812 ⁽⁴⁾	12	17' 11"	5.46	9,800	326	266	44' 2"	13.46	49' 0"	14.95	8,200	3,700
2105	5	20' 11"	6.37	5,910	197	160	18' 6"	5.64	24' 4"	7.42	4,500	2,050
2106	6	20' 11"	6.37	6,980	233	189	22' 2"	6.76	28' 0"	8.54	5,000	2,250
2107	7	20' 11"	6.37	8,050	269	218	25' 10"	7.87	31' 8"	9.65	5,600	2,550
2108	8	20' 11"	6.37	9,120	304	247	29' 6"	8.99	35' 4"	10.77	6,200	2,850
2109	9	20' 11"	6.37	10,190	340	277	33' 2"	10.11	39' 0"	11.89	7,100	3,200
2110 ⁽⁴⁾	10	20' 11"	6.37	11,270	375	306	36' 10"	11.23	42' 7"	12.97	7,600	3,450
2111 ⁽⁴⁾	11	20' 11"	6.37	12,340	411	335	40' 6"	12.35	46' 3"	14.09	8,800	4,000
2112 ⁽⁴⁾	12	20' 11"	6.37	13,410	447	364	44' 2"	13.46	49' 11"	15.21	9,600	4,400
2405	5	23' 10"	7.28	7,820	261	212	18' 6"	5.64	25' 2"	7.68	5,200	2,350
2406	6	23' 10"	7.28	9,220	308	250	22' 2"	6.76	28' 10"	8.80	5,800	2,600
2407	7	23' 10"	7.28	10,610	354	288	25' 10"	7.87	32' 6"	9.92	6,600	3,000
2408	8	23' 10"	7.28	12,010	401	326	29' 6"	8.99	36' 2"	11.03	7,200	3,250
2409	9	23' 10"	7.28	13,410	447	364	33' 2"	10.11	39' 10"	12.15	8,000	3,600
2410 ⁽⁴⁾	10	23' 10"	7.28	14,810	494	402	36' 10"	11.23	43' 5"	13.24	8,800	3,950
2411 ⁽⁴⁾	11	23' 10"	7.28	16,210	540	440	40' 6"	12.35	47' 1"	14.35	9,800	4,450
2412 ⁽⁴⁾	12	23' 10"	7.28	17,610	587	478	44' 2"	13.46	50' 9"	15.47	11,400	5,200
2705	5	26' 10"	8.19	10,010	335	272	18' 6"	5.64	26' 1"	7.94	6,100	2,800
2706	6	26' 10"	8.19	11,780	394	320	22' 2"	6.76	29' 9"	9.06	6,800	3,100
2707	7	26' 10"	8.19	13,550	453	368	25' 10"	7.87	33' 5"	10.18	7,700	3,500
2708	8	26' 10"	8.19	15,320	511	416	29' 6"	8.99	37' 1"	11.30	8,400	3,800
2709	9	26' 10"	8.19	17,090	570	464	33' 2"	10.11	40' 9"	12.41	9,500	4,300
2710 ⁽⁴⁾	10	26' 10"	8.19	18,860	629	512	36' 10"	11.23	44' 3"	13.50	10,200	4,600
2711 ⁽⁴⁾	11	26' 10"	8.19	20,630	688	560	40' 6"	12.35	47' 11"	14.62	11,300	5,150
2712 ⁽⁴⁾	12	26' 10"	8.19	22,400	747	608	44' 2"	13.46	51' 7"	15.73	12,900	5,850
3005	5	29' 10"	9.10	12,510	419	339	18' 6"	5.64	26' 6"	8.09	7,000	3,150
3006	6	29' 10"	9.10	14,700	491	399	22' 2"	6.76	30' 2"	9.20	7,700	3,500
3007	7	29' 10"	9.10	16,880	564	458	25' 10"	7.87	33' 10"	10.32	8,700	3,950
3008	8	29' 10"	9.10	19,070	637	517	29' 6"	8.99	37' 6"	11.44	9,500	4,300
3009	9	29' 10"	9.10	21,250	709	576	33' 2"	10.11	41' 2"	12.56	10,800	4,900
3010 ⁽⁴⁾	10	29' 10"	9.10	23,440	782	636	36' 10"	11.23	44' 8"	13.62	11,800	5,350
3011 ⁽⁴⁾	11	29' 10"	9.10	25,620	854	695	40' 6"	12.35	48' 4"	14.74	13,400	6,050
3012 ⁽⁴⁾	12	29' 10"	9.10	27,810	927	754	44' 2"	13.46	52' 0"	15.86	14,900	6,750
3305	5	32' 10"	10.01	15,320	513	416	18' 6"	5.64	27' 5"	8.35	7,800	3,550
3306	6	32' 10"	10.01	17,960	601	487	22' 2"	6.76	31' 1"	9.47	8,700	3,950
3307	7	32' 10"	10.01	20,610	689	559	25' 10"	7.87	34' 9"	10.58	9,900	4,500
3308	8	32' 10"	10.01	23,250	777	631	29' 6"	8.99	38' 5"	11.70	10,900	4,950
3309	9	32' 10"	10.01	25,900	865	702	33' 2"	10.11	42' 1"	12.82	12,400	5,650
3310 ⁽⁴⁾	10	32' 10"	10.01	28,540	952	774	36' 10"	11.23	45' 7"	13.89	13,600	6,150
3311 ⁽⁴⁾	11	32' 10"	10.01	31,180	1,040	846	40' 6"	12.35	49' 3"	15.00	15,500	7,050
3312 ⁽⁴⁾	12	32' 10"	10.01	33,830	1,128	918	44' 2"	13.46	52' 11"	16.12	17,200	7,800
3605	5	35' 10"	10.91	18,450	618	500	18' 6"	5.64	28' 3"	8.61	8,800	4,000
3606	6	35' 10"	10.91	21,590	723	586	22' 2"	6.76	31' 11"	9.73	9,900	4,500
3607	7	35' 10"	10.91	24,740	827	671	25' 10"	7.87	35' 7"	10.85	11,200	5,100
3608	8	35' 10"	10.91	27,890	932	756	29' 6"	8.99	39' 3"	11.96	12,500	5,650
3609	9	35' 10"	10.91	31,030	1,036	842	33' 2"	10.11	42' 11"	13.08	14,100	6,400
3610 ⁽⁴⁾	10	35' 10"	10.91	34,180	1,141	927	36' 10"	11.23	46' 5"	14.15	15,800	7,150
3611 ⁽⁴⁾	11	35' 10"	10.91	37,330	1,246	1,012	40' 6"	12.35	50' 1"	15.27	17,500	7,950
3612 ⁽⁴⁾	12	35' 10"	10.91	40,470	1,350	1,098	44' 2"	13.46	53' 9"	16.38	19,300	8,750

1. Capacities shown include 30° roof cone.

2. Based on 1.244 ft³ per bu. and 5% compaction below eaves line.

3. Bulk density = 770 kg/m³ = 48 lb/ft³ and 5% compaction below eaves line.

4. Supplied with flat caps – all other models supplied with domed cap and remote cap opener.

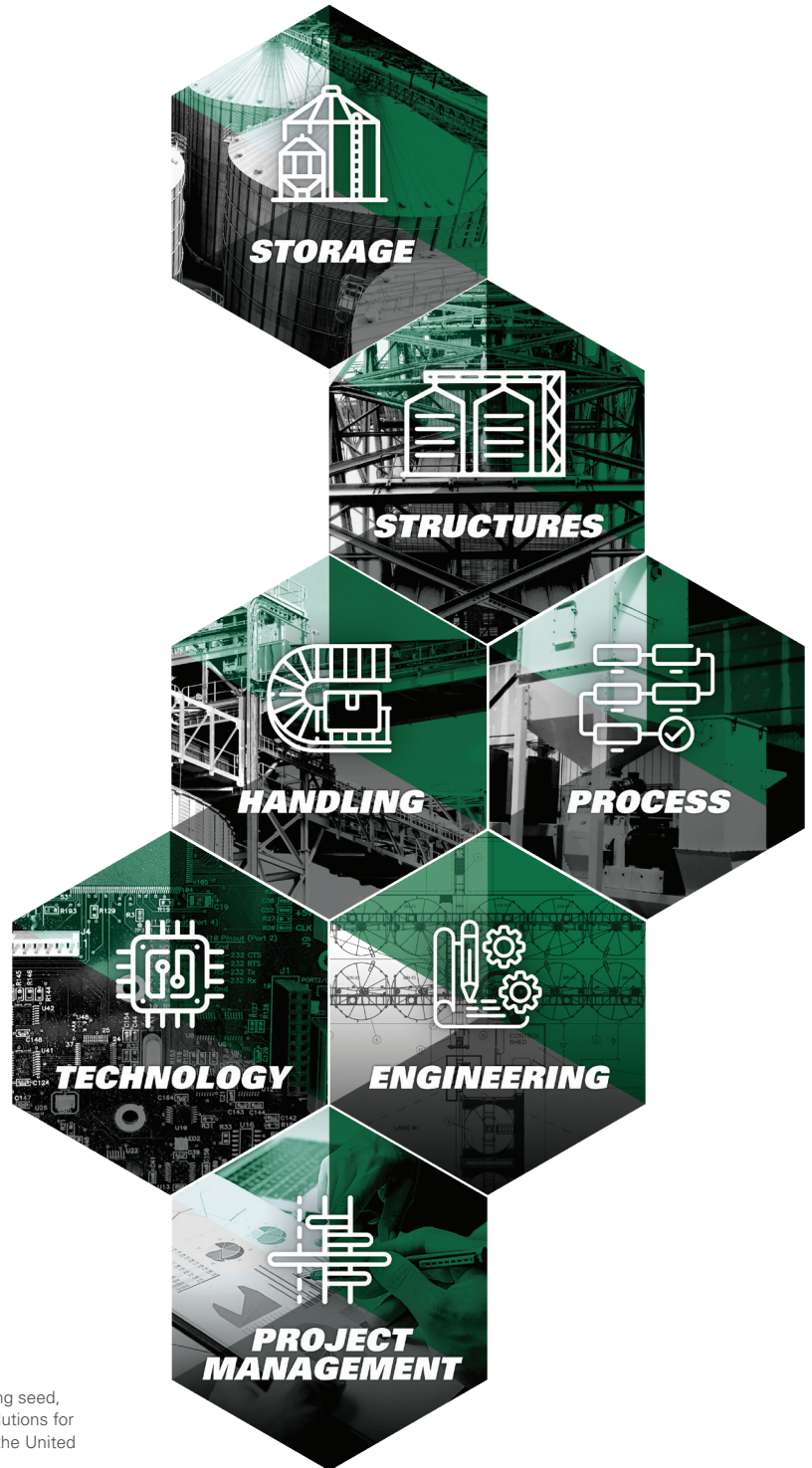
STIFFENED GRAIN BIN SPECIFICATIONS

MODEL NUMBER	TIERS #	DIAMETER		CAPACITY ⁽¹⁾			EAVES HEIGHT		OVERALL HEIGHT ⁽⁴⁾		WEIGHT	
		FT	M	BU ⁽²⁾	M ³	TONNES ⁽³⁾	FT	M	FT	M	LB	KG
3905	5	38' 10"	11.82	21,900	734	594	18' 6"	5.64	29' 1"	8.87	10,500	4,750
3906	6	38' 10"	11.82	25,590	857	694	22' 2"	6.76	32' 9"	9.99	11,800	5,350
3907	7	38' 10"	11.82	29,290	980	794	25' 10"	7.87	36' 5"	11.11	13,200	6,000
3908	8	38' 10"	11.82	32,980	1,103	895	29' 6"	8.99	40' 1"	12.23	15,000	6,800
3909	9	38' 10"	11.82	36,670	1,225	995	33' 2"	10.11	43' 9"	13.35	16,400	7,450
3910 ⁽⁴⁾	10	38' 10"	11.82	40,370	1,348	1,095	36' 10"	11.23	47' 3"	14.41	18,700	8,450
3911 ⁽⁴⁾	11	38' 10"	11.82	44,060	1,471	1,195	40' 6"	12.35	50' 11"	15.53	20,900	9,500
3912 ⁽⁴⁾	12	38' 10"	11.82	47,750	1,593	1,295	44' 2"	13.46	54' 7"	16.65	22,900	10,400
4205	5	41' 9"	12.73	25,690	862	697	18' 6"	5.64	30' 0"	9.14	11,500	5,200
4206	6	41' 9"	12.73	29,970	1,004	813	22' 2"	6.76	33' 8"	10.25	13,100	5,950
4207	7	41' 9"	12.73	34,260	1,147	929	25' 10"	7.87	37' 4"	11.37	14,600	6,600
4208	8	41' 9"	12.73	38,540	1,289	1,045	29' 6"	8.99	41' 0"	12.49	16,500	7,500
4209	9	41' 9"	12.73	42,820	1,431	1,162	33' 2"	10.11	44' 8"	13.61	18,200	8,250
4210 ⁽⁴⁾	10	41' 9"	12.73	47,110	1,574	1,278	36' 10"	11.23	48' 2"	14.67	20,900	9,450
4211 ⁽⁴⁾	11	41' 9"	12.73	51,390	1,716	1,394	40' 6"	12.35	51' 10"	15.79	23,300	10,550
4212 ⁽⁴⁾	12	41' 9"	12.73	55,670	1,858	1,510	44' 2"	13.46	55' 6"	16.91	25,600	11,600
4505	5	44' 9"	13.64	29,830	1,001	809	18' 6"	5.64	30' 10"	9.4	12,700	5,750
4506	6	44' 9"	13.64	34,740	1,165	942	22' 2"	6.76	34' 6"	10.52	14,400	6,550
4507	7	44' 9"	13.64	39,660	1,328	1,076	25' 10"	7.87	38' 2"	11.64	16,000	7,250
4508	8	44' 9"	13.64	44,580	1,491	1,209	29' 6"	8.99	41' 10"	12.75	18,300	8,300
4509	9	44' 9"	13.64	49,490	1,655	1,342	33' 2"	10.11	45' 6"	13.87	20,400	9,250
4510 ⁽⁴⁾	10	44' 9"	13.64	54,410	1,818	1,476	36' 10"	11.23	49' 0"	14.94	23,200	10,500
4511 ⁽⁴⁾	11	44' 9"	13.64	59,330	1,982	1,609	40' 6"	12.35	52' 8"	16.05	25,900	11,750
4512 ⁽⁴⁾	12	44' 9"	13.64	64,240	2,145	1,743	44' 2"	13.46	56' 4"	17.17	28,400	12,900
4805	5	47' 9"	14.55	34,320	1,153	931	18' 6"	5.64	31' 8"	9.66	14,100	6,400
4806	6	47' 9"	14.55	39,910	1,338	1,083	22' 2"	6.76	35' 4"	10.78	16,000	7,250
4807	7	47' 9"	14.55	45,510	1,524	1,234	25' 10"	7.87	39' 0"	11.9	17,900	8,150
4808	8	47' 9"	14.55	51,100	1,710	1,386	29' 6"	8.99	42' 8"	13.02	20,400	9,250
4809	9	47' 9"	14.55	56,690	1,896	1,538	33' 2"	10.11	46' 4"	14.13	23,100	10,450
4810 ⁽⁴⁾	10	47' 9"	14.55	62,290	2,082	1,690	36' 10"	11.23	49' 10"	15.2	25,700	11,650
4811 ⁽⁴⁾	11	47' 9"	14.55	67,880	2,268	1,841	40' 6"	12.35	53' 6"	16.32	28,700	13,050
4812 ⁽⁴⁾	12	47' 9"	14.55	73,480	2,454	1,993	44' 2"	13.46	57' 2"	17.43	31,800	14,450
5105	5	50' 9"	15.46	39,170	1,316	1,062	18' 6"	5.64	32' 2"	9.81	15,600	7,050
5106	6	50' 9"	15.46	45,490	1,526	1,234	22' 2"	6.76	35' 10"	10.93	17,800	8,100
5107	7	50' 9"	15.46	51,800	1,736	1,405	25' 10"	7.87	39' 6"	12.05	19,900	9,050
5108	8	50' 9"	15.46	58,120	1,946	1,576	29' 6"	8.99	43' 2"	13.17	23,300	10,550
5109	9	50' 9"	15.46	64,430	2,156	1,748	33' 2"	10.11	46' 10"	14.28	25,600	11,600
5110 ⁽⁴⁾	10	50' 9"	15.46	70,750	2,366	1,919	36' 10"	11.23	50' 6"	15.4	28,400	12,900
5111 ⁽⁴⁾	11	50' 9"	15.46	77,060	2,576	2,090	40' 6"	12.35	54' 2"	16.52	32,100	14,550
5112 ⁽⁴⁾	12	50' 9"	15.46	83,380	2,785	2,262	44' 2"	13.46	57' 10"	17.64	35,400	16,050
5405	5	53' 9"	16.37	44,400	1,493	1,204	18' 6"	5.64	33' 1"	10.08	16,500	7,450
5406	6	53' 9"	16.37	51,480	1,728	1,396	22' 2"	6.76	36' 9"	11.19	18,900	8,550
5407	7	53' 9"	16.37	58,560	1,963	1,588	25' 10"	7.87	40' 5"	12.31	21,300	9,700
5408	8	53' 9"	16.37	65,640	2,199	1,780	29' 6"	8.99	44' 1"	13.43	24,900	11,250
5409	9	53' 9"	16.37	72,720	2,434	1,972	33' 2"	10.11	47' 9"	14.55	27,800	12,600
5410 ⁽⁴⁾	10	53' 9"	16.37	79,800	2,669	2,164	36' 10"	11.23	51' 5"	15.67	32,500	14,750
5411 ⁽⁴⁾	11	53' 9"	16.37	86,880	2,904	2,356	40' 6"	12.35	55' 1"	16.78	35,500	16,100
5412 ⁽⁴⁾	12	53' 9"	16.37	93,960	3,140	2,549	44' 2"	13.46	58' 9"	17.9	39,700	18,000

1. Capacities shown include 30° roof cone.
2. Based on 1.244 ft³ per bu. and 5% compaction below eaves line.
3. Bulk density = 770 kg/m³ = 48 lb/ft³ and 5% compaction below eaves line.
4. Supplied with flat caps – all other models supplied with domed cap and remote cap opener.

STIFFENED GRAIN BIN SPECIFICATIONS

MODEL NUMBER	TIERS #	DIAMETER		CAPACITY ⁽¹⁾			EAVES HEIGHT		OVERALL HEIGHT ⁽⁴⁾		WEIGHT	
		FT	M	BU ⁽²⁾	M ³	TONNES ⁽³⁾	FT	M	FT	M	LB	KG
6009	9	59' 8"	18.19	90,070	3,042	2,443	33' 2"	10.11	50' 0"	15.32	40,900	18,550
6010	10	59' 8"	18.19	98,720	3,332	2,678	36' 10"	11.23	53' 8"	16.44	44,900	20,400
6011	11	59' 8"	18.19	107,380	3,622	2,913	40' 6"	12.34	57' 4"	17.56	49,500	22,450
6012	12	59' 8"	18.19	116,040	3,913	3,147	44' 2"	13.46	61' 0"	18.67	54,100	24,550
6013	13	59' 8"	18.19	124,700	4,203	3,382	47' 10"	14.58	64' 8"	19.79	59,700	27,050
6014	14	59' 8"	18.19	133,360	4,494	3,617	51' 6"	15.70	68' 4"	20.91	64,400	29,200
6015	15	59' 8"	18.19	142,020	4,784	3,852	55' 2"	16.81	72' 0"	22.03	69,900	31,700
6016	16	59' 8"	18.19	150,670	5,075	4,087	58' 10"	17.93	75' 8"	23.14	76,593	34,742
6017	17	59' 8"	18.19	159,330	5,365	4,322	62' 6"	19.05	79' 4"	24.26	83,099	37,693
6018	18	59' 8"	18.19	167,990	5,656	4,557	66' 2"	20.17	83' 0"	25.38	88,900	40,300
6019	19	59' 8"	18.19	176,650	5,946	4,791	69' 10"	21.29	86' 8"	26.50	95,200	43,150
6020	20	59' 8"	18.19	185,310	6,237	5,026	73' 6"	22.40	90' 4"	27.61	102,500	46,450
6021	21	59' 8"	18.19	193,960	6,527	5,261	77' 2"	23.52	94' 0"	28.73	109,600	49,700
6022	22	59' 8"	18.19	202,620	6,818	5,496	80' 10"	24.64	97' 8"	29.85	118,100	53,600
6023	23	59' 8"	18.19	211,280	7,108	5,731	84' 6"	25.76	101' 4"	30.97	126,200	57,250
6609	9	65' 8"	20.01	110,600	3,737	3,000	33' 2"	10.11	51' 9"	15.77	47,300	21,450
6610	10	65' 8"	20.01	121,080	4,089	3,284	36' 10"	11.23	55' 5"	16.89	52,400	23,750
6611	11	65' 8"	20.01	131,560	4,440	3,568	40' 6"	12.35	59' 1"	18.00	58,000	26,350
6612	12	65' 8"	20.01	142,030	4,792	3,853	44' 2"	13.46	62' 9"	19.12	63,200	28,650
6613	13	65' 8"	20.01	152,510	5,143	4,137	47' 10"	14.58	66' 5"	20.24	69,000	31,300
6614	14	65' 8"	20.01	162,990	5,495	4,421	51' 6"	15.70	70' 1"	21.36	75,300	34,150
6615	15	65' 8"	20.01	173,460	5,846	4,705	55' 2"	16.82	73' 9"	22.47	82,000	37,200
6616	16	65' 8"	20.01	183,940	6,198	4,989	58' 10"	17.93	77' 5"	23.59	89,905	40,780
6617	17	65' 8"	20.01	194,480	6,551	5,275	62' 6"	19.06	81' 1"	24.72	98,377	44,623
6618	18	65' 8"	20.01	204,950	6,902	5,559	66' 2"	20.17	84' 9"	25.83	105,300	47,750
6619	19	65' 8"	20.01	215,430	7,254	5,843	69' 10"	21.29	88' 5"	26.95	114,700	52,050
6620	20	65' 8"	20.01	225,910	7,605	6,128	73' 6"	22.41	92' 1"	28.07	122,900	55,750
6621	21	65' 8"	20.01	236,380	7,957	6,412	77' 2"	23.53	95' 9"	29.19	132,600	60,100
6622	22	65' 8"	20.01	246,860	8,308	6,696	80' 10"	24.65	99' 5"	30.30	142,100	64,450
6623	23	65' 8"	20.01	257,340	8,660	6,980	84' 6"	25.76	103' 1"	31.42	151,100	68,500



WESTEEL is an AGI Brand.

AGI is a leading provider of equipment solutions for agriculture bulk commodities including seed, fertilizer, grain, and feed systems with a growing platform in providing equipment and solutions for food processing facilities. AGI has manufacturing facilities in Canada, the United States, the United Kingdom, Brazil, India and Italy and distributes its products globally.

AGI **WESTEEL**

198 Commerce Drive, Winnipeg, Manitoba, Canada R3P 0Z6

P 204.233.7133 | 888.Westeel (937.8335) | info@westeel.com | aggrowth.com/westeel

QMI-SAI Registered | ISO 9001-2015

AGGROWTH.COM [aggrowthintl](https://www.youtube.com)     